

DOORS & WINDOWS SCHEDULE

NO	SILL	LINTEL	SIZE
D1	200	2250	1100X2150
D2	200	2150	1000X2050
D3	200	2150	900X2150
D4	150	2150	750X2150
SD	2150	1650X2150	
SD1	2150	2100X2150	
SD2	2150	1935X2150	
SD3	2150	1605X2150	
SD4	2150	2495X2150	
SD5	2150	1505X2150	
SD6	2150	1505X2150	
W1	950	2150	2400X1200
W2	950	2150	2100X1200
W3	1250	2150	1500X1200
W4	1100	2150	1500X1200
W5	950	2150	1200X1200
W6	950	2150	1200X1200
W7	950	2150	1200X1200
W8	1100	2150	1800X1200
W9	950	2150	1150X1050
W10	950	2150	1800X1200
W11	950	2150	800X1200
W12	950	2150	800X1200
W13	950	2150	800X1200
W14	950	2150	800X1200
W15	950	2150	800X1200
W16	950	2150	800X1200
W17	950	2150	800X1200
W18	950	2150	800X1200
W19	950	2150	800X1200
W20	950	2150	800X1200
W21	950	2150	800X1200
W22	950	2150	800X1200
W23	950	2150	800X1200
W24	950	2150	800X1200
W25	950	2150	800X1200
W26	950	2150	800X1200
W27	950	2150	800X1200
W28	950	2150	800X1200
W29	950	2150	800X1200
W30	950	2150	800X1200
W31	950	2150	800X1200
W32	950	2150	800X1200
W33	950	2150	800X1200
W34	950	2150	800X1200
W35	950	2150	800X1200
W36	950	2150	800X1200
W37	950	2150	800X1200
W38	950	2150	800X1200
W39	950	2150	800X1200
W40	950	2150	800X1200
W41	950	2150	800X1200
W42	950	2150	800X1200
W43	950	2150	800X1200
W44	950	2150	800X1200
W45	950	2150	800X1200
W46	950	2150	800X1200
W47	950	2150	800X1200
W48	950	2150	800X1200
W49	950	2150	800X1200
W50	950	2150	800X1200
W51	950	2150	800X1200
W52	950	2150	800X1200
W53	950	2150	800X1200
W54	950	2150	800X1200
W55	950	2150	800X1200
W56	950	2150	800X1200
W57	950	2150	800X1200
W58	950	2150	800X1200
W59	950	2150	800X1200
W60	950	2150	800X1200
W61	950	2150	800X1200
W62	950	2150	800X1200
W63	950	2150	800X1200
W64	950	2150	800X1200
W65	950	2150	800X1200
W66	950	2150	800X1200
W67	950	2150	800X1200
W68	950	2150	800X1200
W69	950	2150	800X1200
W70	950	2150	800X1200
W71	950	2150	800X1200
W72	950	2150	800X1200
W73	950	2150	800X1200
W74	950	2150	800X1200
W75	950	2150	800X1200
W76	950	2150	800X1200
W77	950	2150	800X1200
W78	950	2150	800X1200
W79	950	2150	800X1200
W80	950	2150	800X1200
W81	950	2150	800X1200
W82	950	2150	800X1200
W83	950	2150	800X1200
W84	950	2150	800X1200
W85	950	2150	800X1200
W86	950	2150	800X1200
W87	950	2150	800X1200
W88	950	2150	800X1200
W89	950	2150	800X1200
W90	950	2150	800X1200
W91	950	2150	800X1200
W92	950	2150	800X1200
W93	950	2150	800X1200
W94	950	2150	800X1200
W95	950	2150	800X1200
W96	950	2150	800X1200
W97	950	2150	800X1200
W98	950	2150	800X1200
W99	950	2150	800X1200
W100	950	2150	800X1200

NAME OF OWNER

NAME OF THE COMPANY

- 1 Broad Tie Up Private Limited
- 2 Panorama Marketing Private Limited (formerly known as Panorama Marketing Limited)
- 3 Browse Merchants Private Limited
- 4 Darpad Tie Up Private Limited
- 5 Darpad Promoters Private Limited
- 6 Geranium Projects Private Limited
- 7 Majestic Conclave Private Limited
- 8 Recoup Tracom Private Limited
- 9 Recoup Vinimay Private Limited

Sulene Choudhary
Authorised Signatory

SIGNATURE OF OWNER

CERTIFICATE OF ARCHITECT

I CERTIFY THAT ALL THE ARCHITECTURAL DRAWINGS OF THE PROJECT AT BELOW MENTIONED PREMISES HAVE BEEN PREPARED BY ME COMPLYING WITH THE PROVISIONS OF NATIONAL BUILDING CODE AND THE WEST BENGAL MUNICIPAL BUILDING RULE 2007. I SHALL BE HELD RESPONSIBLE IF ANY INCORRECT INFORMATION IS FURNISHED BY ME INCLUDING AREA CALCULATION CHARTS IN THIS DRAWING OR ANY VIOLATION OF THE PROVISION OF THESE RULES IS FOUND IN ANY OF THE DRAWINGS AND DOCUMENTS, SIGNED BY ME AND SUBMITTED TO THE SANCTIONING AUTHORITY FOR OBTAINING SANCTION.

JAY PRAKASH BHARAT KUMAR AGRAWAL

B. Arch., A.I.I.A.

Reg. No. CA/88/10098

ARCHITECT SL. NO. - 32(A)

SIGNATURE OF ARCHITECT

CERTIFICATE OF STRUCTURAL ENGINEER

WE HEREBY CERTIFY THAT THE FOUNDATION AND SUPERSTRUCTURE OF THE BUILDING PROPOSED FOR CONSTRUCTION ON R.S./L.R. DAG NOS. - 15(P), 28(P), 29, 30(P), 31, 32, 33, 34, 35, 36, 41, 42, 43(P), 44, 45, 46, 47(P), 48(P), 49(P), 53(P), 45/935, 66(P) & 72(P), L.R. KHATIAN NOS. 3721, 3722, 3723, 3724, 3725, 3726, 3727, 4149, 4150 UNDER HARIHARPUR GRAM PANCHAYET, POLICE STATION, BARUIPUR, DISTRICT-SOUTH 24 PGS. HAVE BEEN SO DESIGNED BY US WILL MAKE SUCH FOUNDATION AND SUPERSTRUCTURE SAFE IN ALL RESPECTS INCLUDING THE CONSIDERATION OF BEARING CAPACITY & SETTLEMENT OF SOIL ETC.

SANJAY KUMAR DUBEY

ME (Structure), Chartered Engineer (I)

Structural Engineer, ESE-1142

Kolkata Municipal Corporation

SIGNATURE OF STRUCTURAL ENGG.

TITLE

GROUND FLOOR, 1ST FLOOR PLAN, ROOF PLAN, ELEVATION, SECTION 6A-6A, 6B-6B & DETAILS OF O.H.W.R. (BLOCK-6)

PROJECT

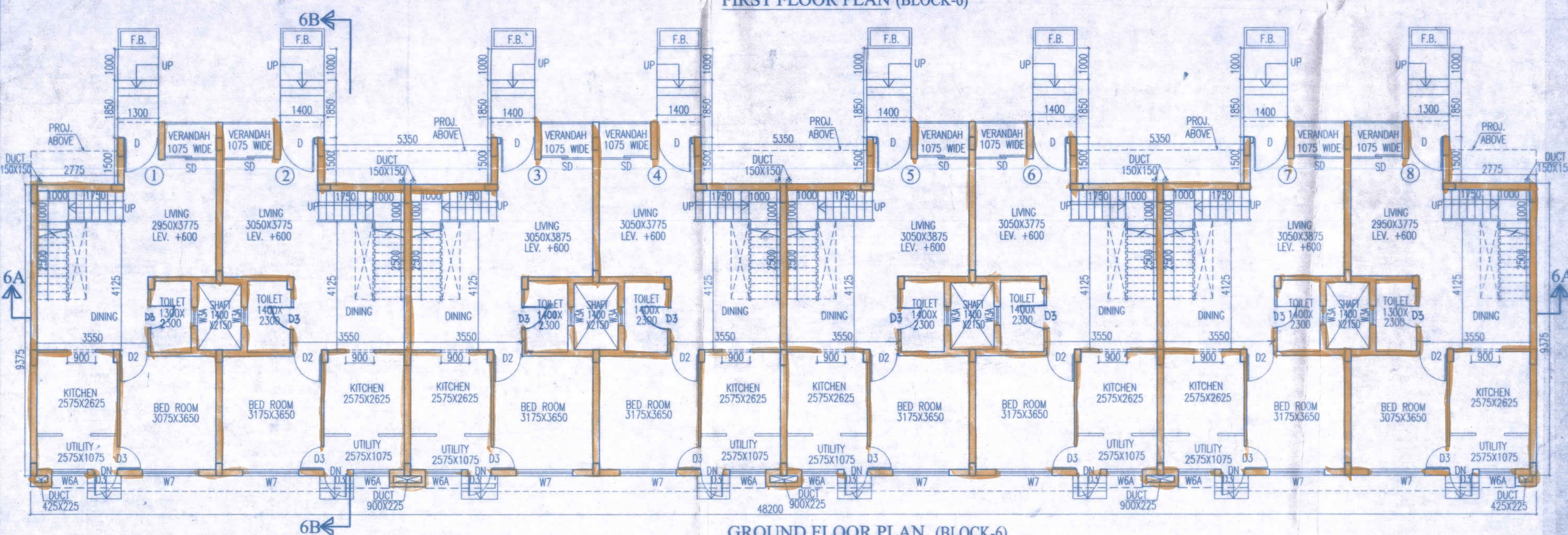
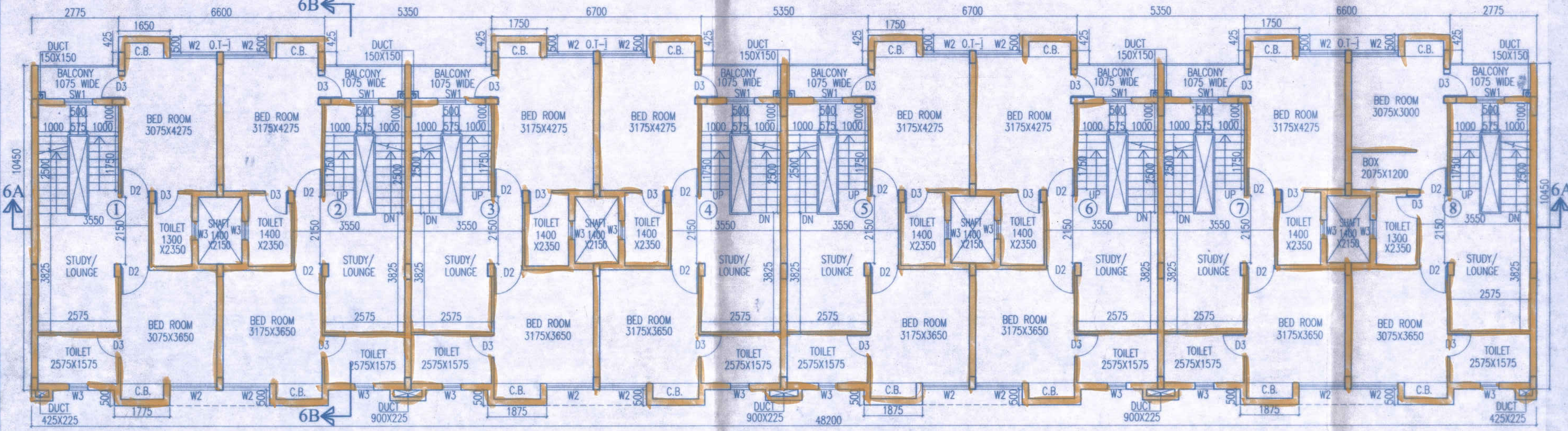
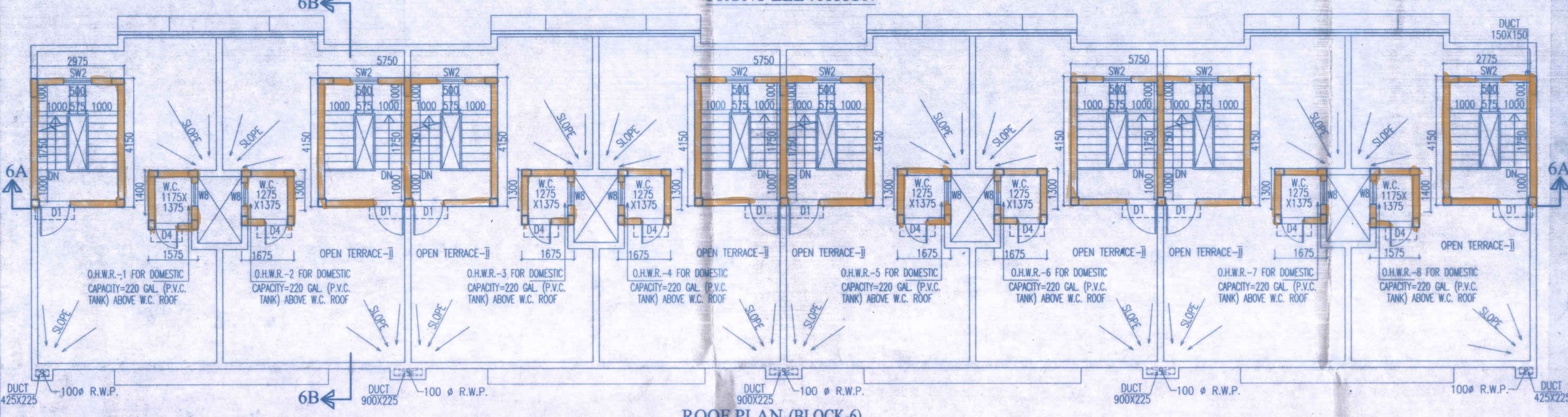
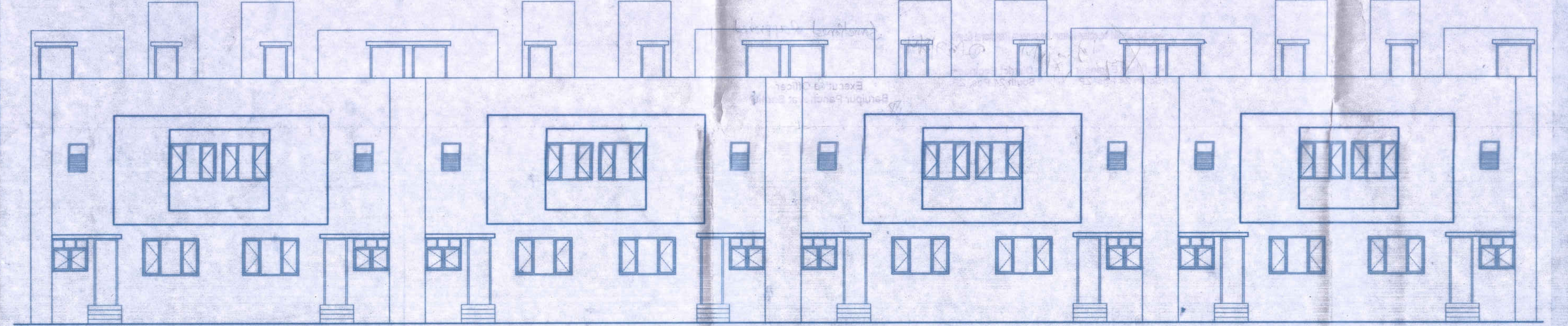
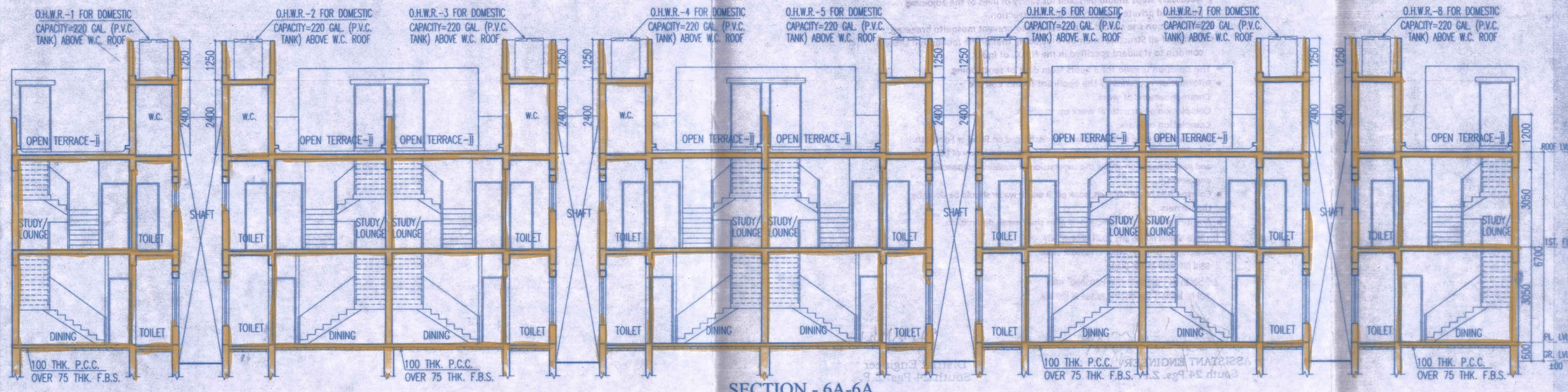
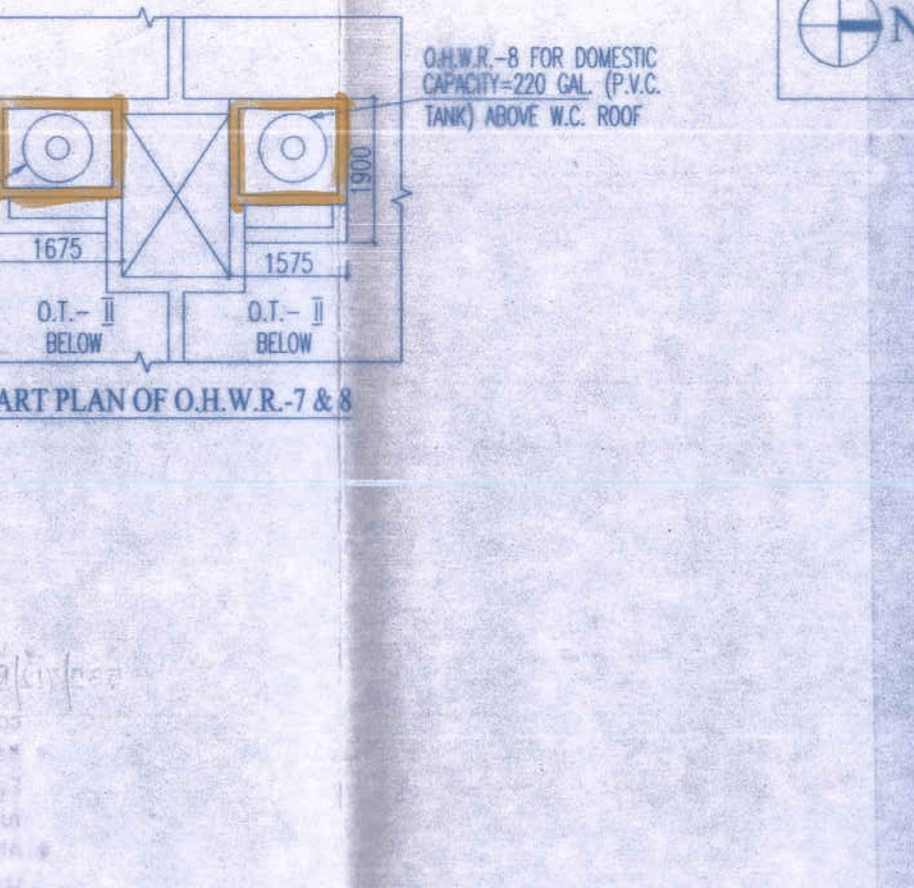
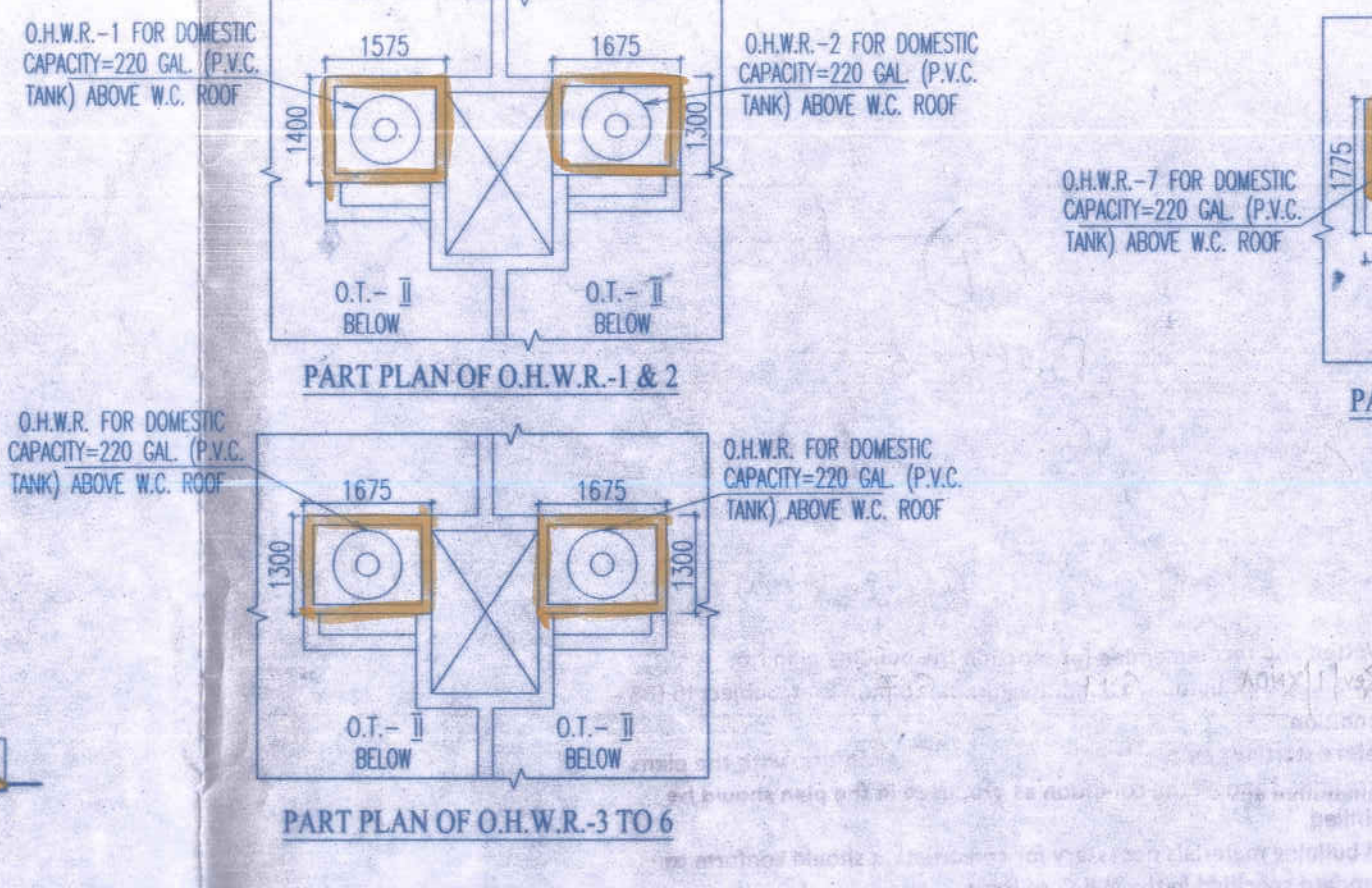
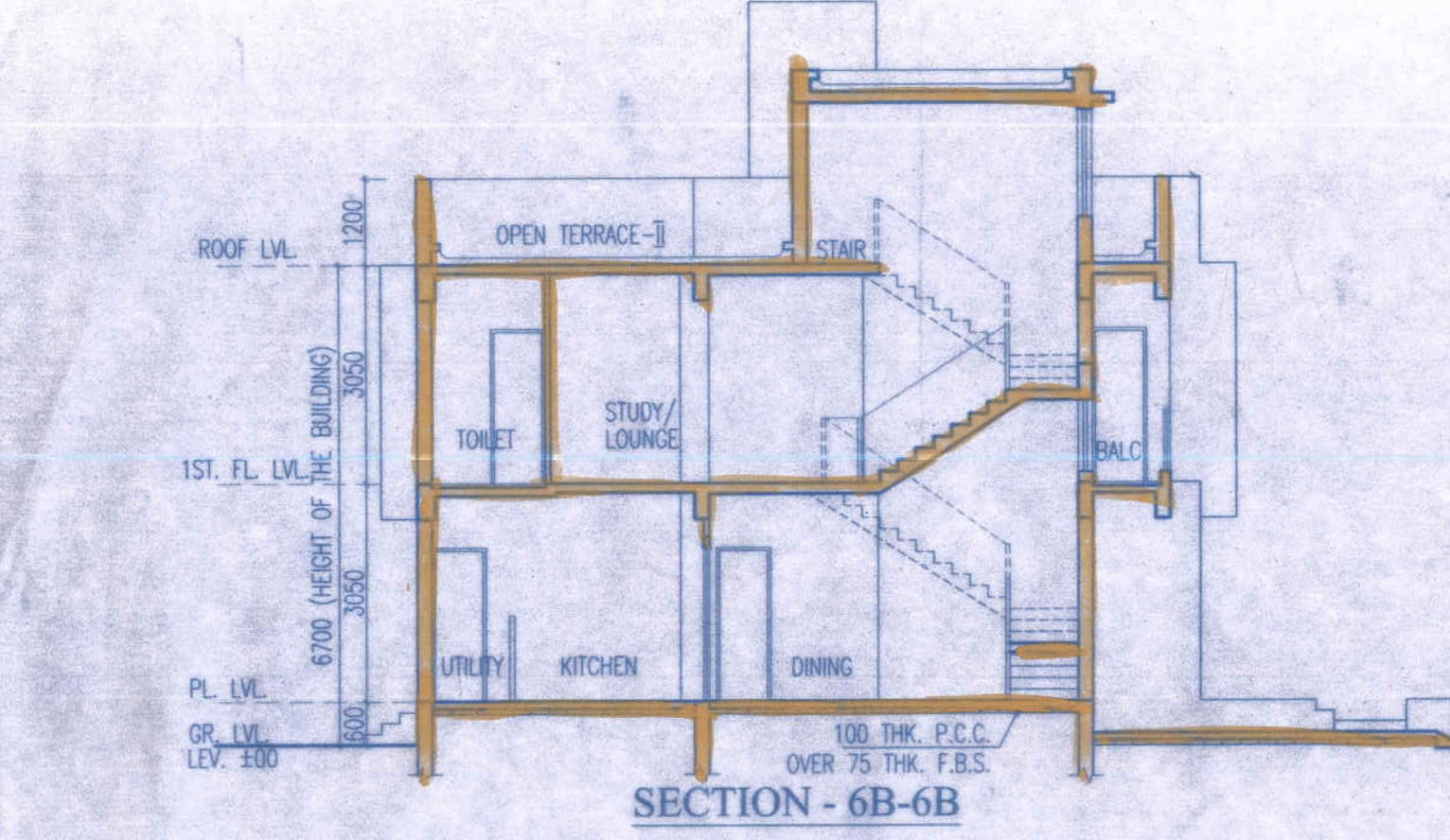
REVISED PLAN OF 10+8 STORED HOUSING COMPLEX SHOWING ADDITION OF 6 NEW BLOCKS & ALTERATION OF 7 EXISTING BLOCKS SANCTIONED UNDER MEMO NO. 479/BPS/2019, DATED - 21.11.2018. AT MOUZA- HARIHARPUR, J.L. NO.-11, R.S./L.R. DAG NOS. - 15(P), 28(P), 29, 30(P), 31, 32, 33, 34, 35, 36, 41, 42, 43(P), 44, 45, 46, 47(P), 48(P), 49(P), 53(P), 45/935, 66(P) & 72(P), L.R. KHATIAN NOS. 3721, 3722, 3723, 3724, 3725, 3726, 3727, 4149, 4150 UNDER HARIHARPUR GRAM PANCHAYET, P.S.- BARUIPUR, DISTRICT-SOUTH 24 PGS.

ARCHITECTS

AGRAWAL & AGRAWAL

BARODA & KOLKATA

SCALE: DATE: DEALT: CHECKED: 1:80 24.04.21 SUMAN PRASANT TARIK (SOURAV)



7

Block - 6

Ground, 1st & Roof Plan

Section & Elevations

582/12/Rev.1/KMDA...upto...G.3.1...neg...G.7...mt. Subject to the condition

- Before starting any construction work, the owner must conform with the plans sanctioned and all the condition as proposed in the plan should be fulfilled.
 - All building materials necessary for construction should conform to standard specified in the N.B.C. of India.
 - Necessary steps should be taken for safety of lives of the adjoining public and private property during construction.
 - Construction site should be maintained to prevent mosquito breeding.
 - Design of all Structural members including that of the foundation should conform to standard specified in the N.B.C. of India.
 - The sanction is valid for 3 years from date of sanctioning
 - Information required by the applicant to this end are :-
 Commencement of work.
 Completion of structural work up to plinth.
 Completion of work.
 - No rain water pipe should be fixed or discharged on Road or Footpath.
 - The construction should be carried out as per specification of I.S. Code and sanctioned plan under the supervision of qualified empanelled engineers.
 - Construction of garbage vat, soak pit & waste water should be done by the owners.
 - Any deviation of the sanctioned plan shall mean demolition.
1. There should not be any court case or any complains from any corner in respect of the said property as per plan.
 2. "South 24 Parganas Zilla Parishad" will not be liable if any dispute arises at the site.

[Signature]
ASSISTANT ENGINEER
South 24 Pgs. Z.P.

[Signature]
District Engineer
South 24 Pgs. Z.P.

Sanction should be obtained from the concern Panchayat Sarani.

[Signature]
Assistant Engineer
South 24 Pgs. Z.P.

[Signature]
District Engineer
South 24 Pgs. Z.P.

Sanctioned & approved

[Signature]
Executive Officer
Baruipur Panchayat Samity